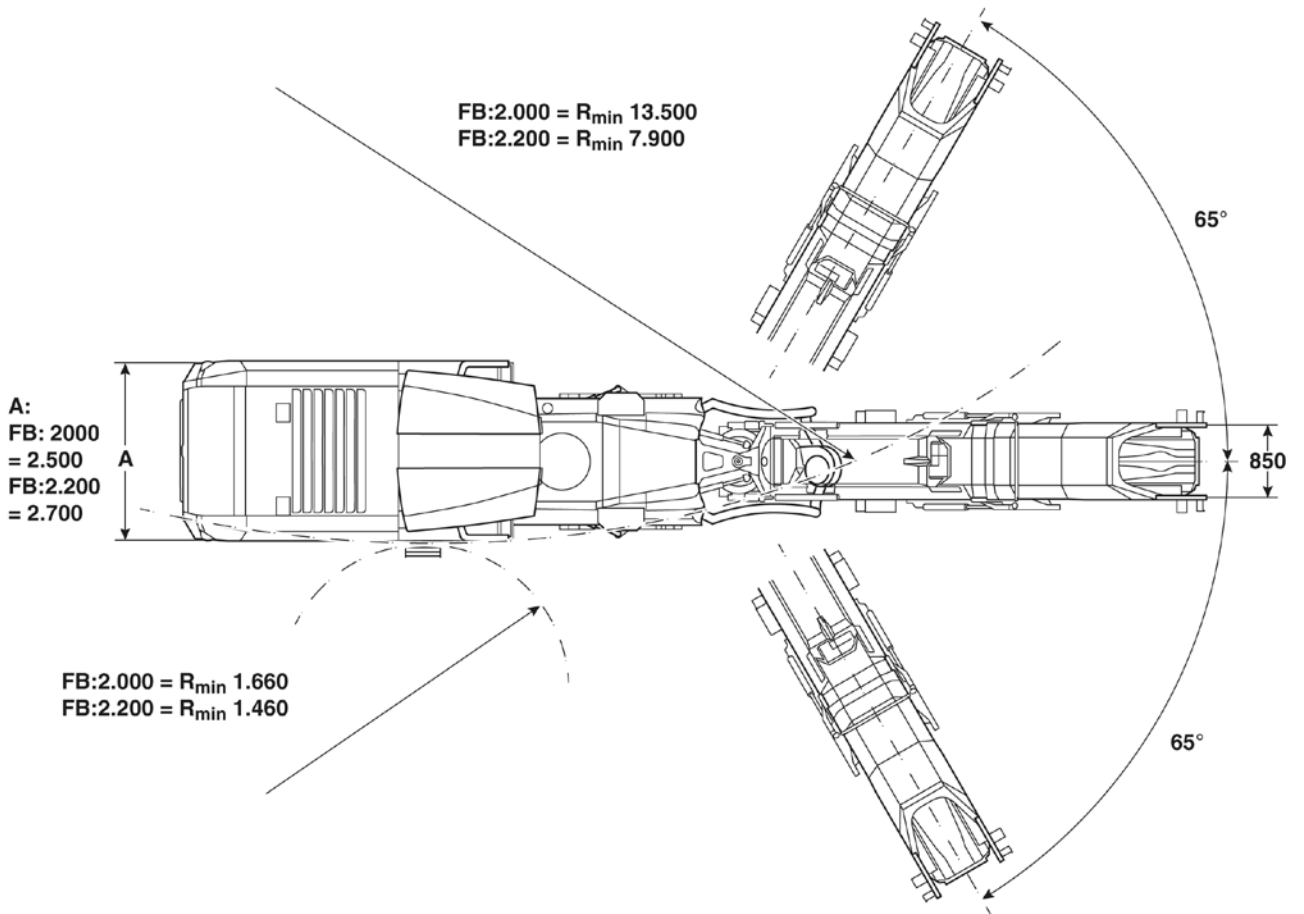
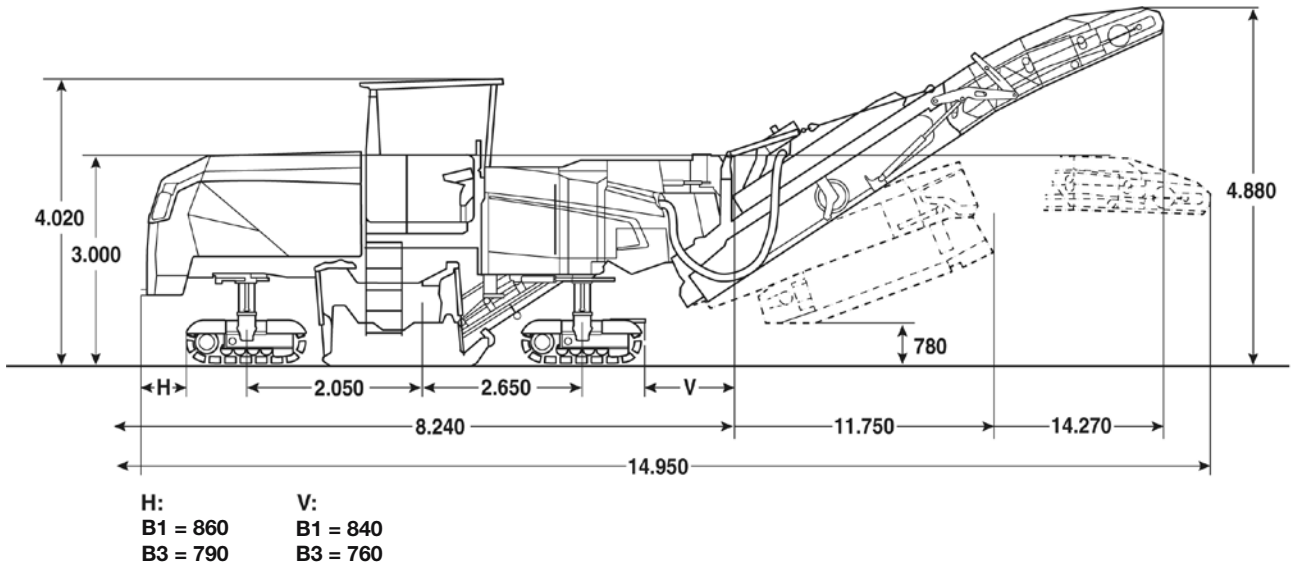


TECHNICAL DATA

COLD PLANER (STAGE V)

BM 2000/65, BM 2200/65





Technical Data

Milling Drum Speed

Working width max	mm	2.000	2.200
Working depth	mm	0 – 350	0 – 350
Linespace	mm	15	15
Cutting diameter	mm	1.020	1.020
No of tools		162	174
Milling drum speed	min ⁻¹	variable, 90, 105, 115	variable, 90, 105, 115

Drive Train

Manufacturer		Cummins	Cummins
Type		X15	X15
Cooling		Liquid cooled	Liquid cooled
Cylinders / Displacement	cm ³	6 / 14.900	6 / 14.900
Performance	kW / PS	470 / 640	470 / 640
Idle at rated Power	min ⁻¹	1.900	1.900
Max Torque	Nm / rpm	2.778 / @1.400	2.778 / @1.400
Fuel consumption, at max Torque / at rated Power	g/kWh	218 @ 1.900	218 @ 1.900
Generator	V / A	24 / 190	24 / 190
Battery	V / Ah	2 x 12 / 200	2 x 12 / 200
Emission level		Stage V / Tier 4f	Stage V / Tier 4f

Driving Characteristics

Transport Speed	km/h	0 – 6	0 – 6
Working speed	m/min	0 – 100	0 – 100
Crawlers (B1)	mm	1.550 x 270 x 595	1.550 x 270 x 595

Capacities

Fuel	l	1.200	1.200
Water	l	3.250	3.250
Hydraulic oil	l	200	200

Loading System

Conveyor width, inner /outer	mm	850 / 850	850 / 850
Theoretical discharge capacity	m ³ /h	485	485
Discharge height	mm	4.880	4.880

Weights

Max. Operating Weight (incl. Options)	kg	33.400	33.800
Operating Weight CECE	kg	27.000	27.350
Basic Weight	kg	24.650	25.000

Additional weights for Options

Canopy	kg	370	370
Dust reduction system	kg	160	160
Compressor	kg	50	50
Ballast 1	kg	975	975
Ballast 2	kg	830	830
B3 Track	kg	600	600
Auxiliary unit	kg	150	150
Scanning FW	kg	130	130

Technical modifications reserved. Machines may be shown with optional accessories. Actual machine weight depends on the respective configuration.

Standard

Milling technology

- Milling drum LA15 including wear protection on the sides
- BOMAG BMS 15 L exchangeable toolholder
- 3 Milling-Drum-speeds, 100, 112, 130
- Proportional adjustable water injection, 0-12 l/min
- Automatic water saving device
- Levelling, 2 sides + slope
- Wear-free, digital Milling depth display
- Proportional Milling depth adjustment
- Two proportional speeds for Milling-depth-adjustment
- Hydraulically operated side-plates with 500 mm (right) and 400 mm (left) stroke
- Hydraulically operated front mouldboard
- Hydraulically rear mouldboard with adjustable preload-pressure
- Right side-plate for fast Drum-exchange
- Automatic load-control
- Automatic distribution of traction
- Hydraulically foldable Conveyor with +65° swivel angle
- Camera system: 1x discharge belt; 1x on the back
- BOMAG Dual Filtration
- BOMAG Easy Cut
- BOMAG Easy Level

Drive Systems

- 4 crawler B1 size steerable, front or/and rear
- Crab walk
- Variable transport speed
- Variable operating speed
- Mechanical Drum-drive

Operation comfort

- Fully vibration-isolated operator-platform
- Comfort zones at the standing areas for fatigueless operation
- Adjustable dashboards
- Standardized self-explanatory, well-arranged dashboards
- Large storage at ground level
- Service- and maintenance-points ergonomic concentrated
- Large Storage compartment at the operator platform including 24V plug and flexible layer
- Diesel and AdBlue fill comfortable and safely place at the operator station
- BOMAG Fast Select for a fast machine operation

Safety & environmental protection

- Noise optimized design
- Liquid cooled engine following latest emission rules without hot exhaust jet to the back
- Integrated working lights
- Rotary-beacon
- Mirrors
- CE-conform safety-package with emergency-stop-switches
- Back-up-alarm

Optional

Basic machine

- Track chains B3 size
- Storage compartment for cutting tools on the track chains
- Weather protection roof
- Plexiglas weather protection for the side railings
- Water filling pump
- High pressure cleaner
- Hose reel
- Dust reduction system
- ION DUST SHIELD
- Auxiliary Drum Drive for easy tool exchange
- Compressed air system
- Additional motor for auxiliary function & emergency drive function
- Additional compartment for cutting tool
- Additional working-light, magnet base
- Advanced lighting package – additional 142.000 lm
- Ballast weights
- Special colour
- Biodegradable hydraulic oil
- Slewable standing support
- Vandalism protection

Milling technology

- Quick-exchange drum-system
- Milling-Drum 2000, BMS 15 L, LA15
- Milling-Drum 2200, BMS 15 L, LA15
- Milling-Drum 2000, BMS 15 L, LA8
- Milling-Drum 2200, BMS 15 L, LA8
- POWER DRUM 2000, BMS 15 L, LA23
- POWER DRUM 2200, BBMS 15 L, LA23
- Additional Milling Drum Bearing

Levelling Systems and electronic support

- Additional external BOMAG Easy Level Display
- 2 scanners left & right in front of the milling box
- Camera system: 2 additional camera's: 1x downholder; 1x rear scraper
- BOMAG TELEMATIC

